



Pressrelease

Virtual Data Federation Server SAGA.M31 – Galaxy - Version 1.3 released

Alzey, 21st February 2006

SAGA D.C. GmbH today released the latest Version of their Virtual Data Federation Server Software **SAGA.M31 – Galaxy –**.

The **Limited Edition** with a maximum of 5 concurrent Container is available for free download at <http://galaxy.sagadc.com>. The commercial Version **Professional Edition** is already running since November 2006 with several thousand requests per day at SAGA D.C. customer's installation. Now the benefits are also available to the free of charge version.

The main changes compared to version 1.2 are:

- Complete new User Interface
- Brand new 3270 Implementation based upon a SAGA D.C. project
- Full supported Update/Delete/Insert Function for all Backend Systems (SQL/LDAP/3270)
- Enhanced Container Statistics
- Enhanced Error Logging and Reporting within the XML/SOAP Structure
- Enhanced WSDL Structure
- Drop of the dependency to use MySQL as SQL Server for **SAGA.M31 – Galaxy –**

SAGA D.C. GmbH also released the latest version of the companion **Eclipse Plugin**. Using this plugin, support for Java and/or PHP projects utilizing **SAGA.M31 – Galaxy –** is only a matter of minutes within the Eclipse IDE. There is also an Perl-API available for free download.

The Virtual Data Federation Server **SAGA.M31 – Galaxy –** allows the easy implementation of Data from different Back-End systems like SQL Server (MySQL, Oracle, DB2 etc), Directory Services (iPlanet, eDirectory, Active Directory, OpenLDAP etc) and 3270 based Mainframe Transactions into a single XML or SOAP based request.

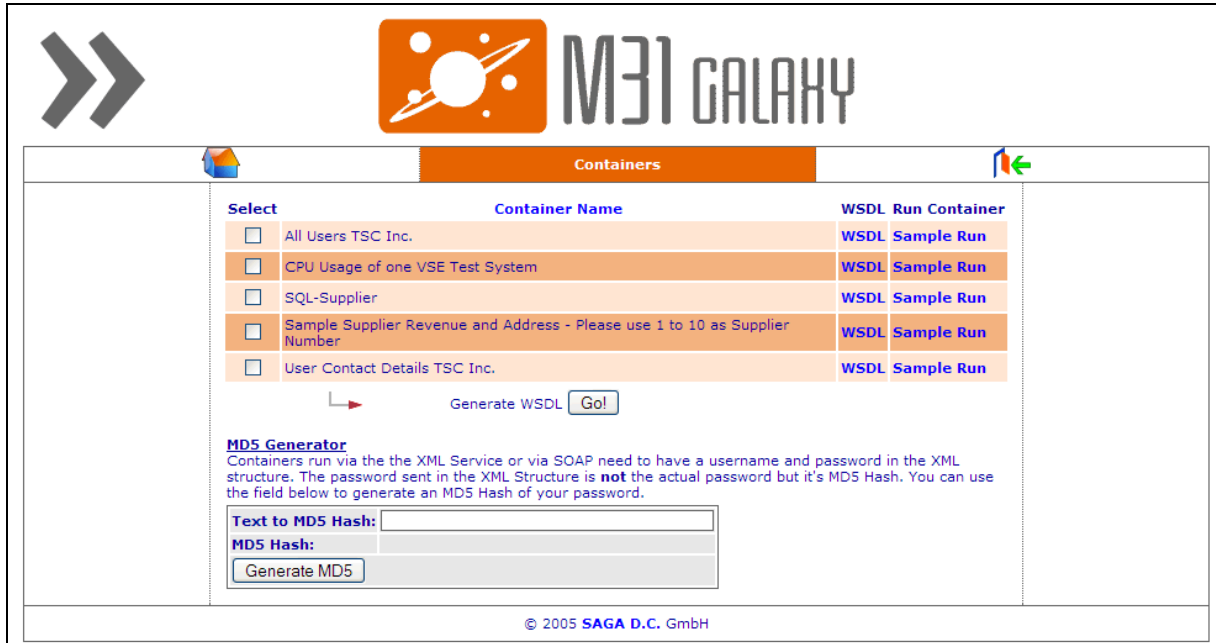
An automated WSDL Generator provides the information to easily create your own Web Services pretty easily. Also the integration of such data into Microsoft Office Application is just a matter of clicks. The administration is done via an Web based User Interface (WUI) and is possible without any programming knowledge. To assign the so created Data Container to users is done also within this WUI.

Using the Eclipse Plugin, each JAVA or PHP project can easily retrieve Information through the service of **SAGA.M31 – Galaxy –**.



Pressrelease

Screenshots:



The screenshot shows the 'Containers' section of the M31 GALAXY interface. It features a table with columns for 'Select', 'Container Name', and 'WSDL Run Container'. Below the table is an 'MD5 Generator' section with input fields for 'Text to MD5 Hash' and 'MD5 Hash', and a 'Generate MD5' button. The footer contains the copyright notice '© 2005 SAGA D.C. GmbH'.

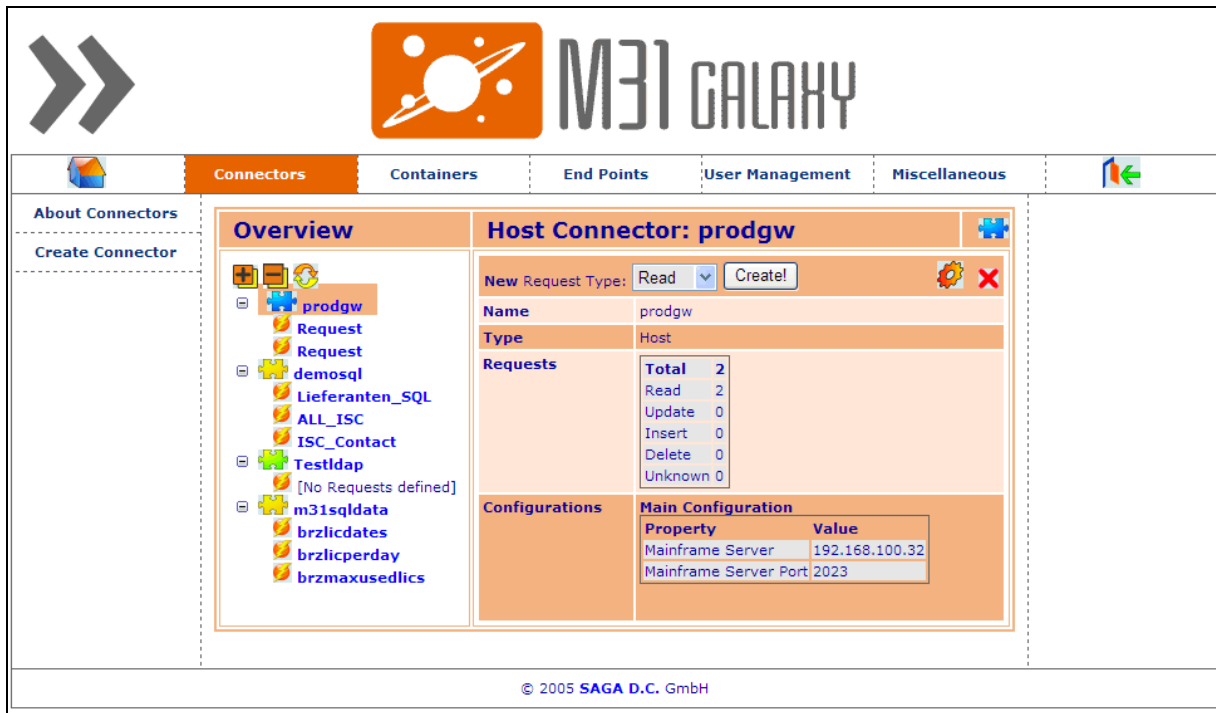
Select	Container Name	WSDL Run Container
<input type="checkbox"/>	All Users TSC Inc.	WSDL Sample Run
<input type="checkbox"/>	CPU Usage of one VSE Test System	WSDL Sample Run
<input type="checkbox"/>	SQL-Supplier	WSDL Sample Run
<input type="checkbox"/>	Sample Supplier Revenue and Address - Please use 1 to 10 as Supplier Number	WSDL Sample Run
<input type="checkbox"/>	User Contact Details TSC Inc.	WSDL Sample Run

MD5 Generator
 Containers run via the XML Service or via SOAP need to have a username and password in the XML structure. The password sent in the XML Structure is **not** the actual password but it's MD5 Hash. You can use the field below to generate an MD5 Hash of your password.

Text to MD5 Hash:
 MD5 Hash:
 Generate MD5

© 2005 SAGA D.C. GmbH

User Interface for „Non-Admins“



The screenshot shows the 'Connectors' section of the M31 GALAXY interface. It displays a tree view of connectors on the left and a detailed view of the 'prodgw' connector on the right. The detailed view includes a 'New Request Type' dropdown set to 'Read', a 'Name' field with 'prodgw', and a 'Type' field with 'Host'. It also shows a 'Requests' table and a 'Main Configuration' table.

Overview

- prodgw
 - Request
 - Request
- demosql
 - Lieferanten_SQL
 - ALL_ISC
 - ISC_Contact
- Testldap
 - [No Requests defined]
- m31sqldata
 - brzlicdates
 - brzlicperday
 - brzmaxusedlics

Host Connector: prodgw

New Request Type: Read

Name: prodgw
 Type: Host

Requests	Total
Total	2
Read	2
Update	0
Insert	0
Delete	0
Unknown	0

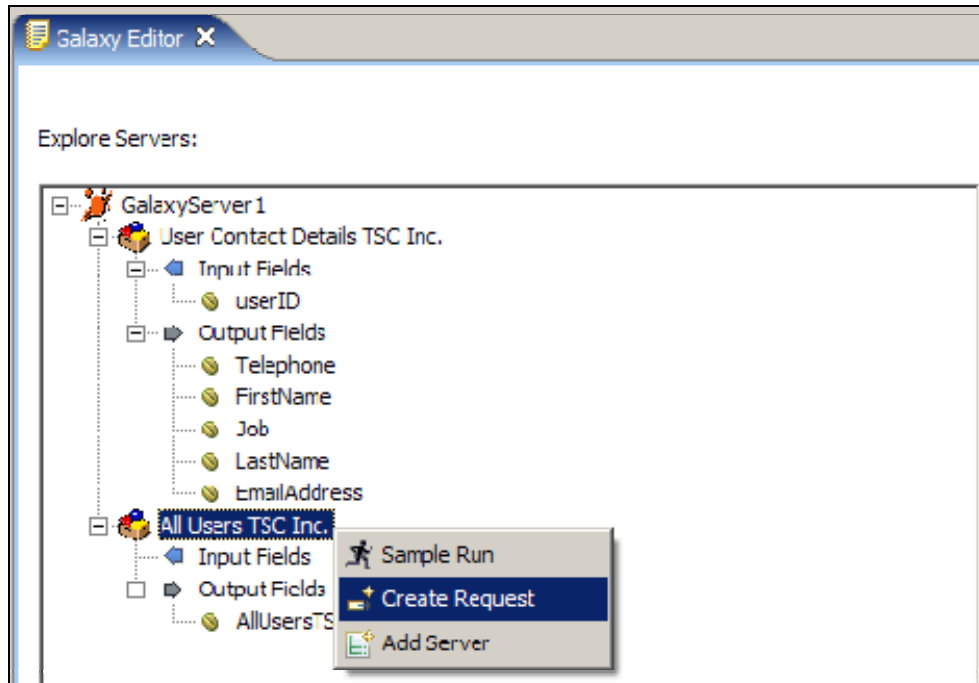
Main Configuration	
Property	Value
Mainframe Server	192.168.100.32
Mainframe Server Port	2023

© 2005 SAGA D.C. GmbH

User Interface Connector-Overview



Pressrelease



Eclipse-Plugin Screenshot (Request Configuration)

A complete (german) Documentation can be found under the URL <http://galaxy.sagadc.com/GalaxyDoc/>.

More information, also in English, are available on the Product-Website under <http://galaxy.sagadc.com> which is also the central place for information around the whole product.

Questions and more information can also be requested by Email under <mailto:galaxy@sagadc.com>.

SAGA D.C. GmbH was founded 1988 as an independent Software and Consulting Company. Key focus since the first day is the Integration of Data and Networks in heterogeneous Environments. Since many years, SAGA D.C. is Platinum PRO Partner of OpenConnect Systems for Germany, Austria and Switzerland. SAGA D.C. is also Business Partner of IBM's Software Group in Germany.

Other areas of business are Security, Single-Sign-On Solutions and Output Management.

Address:
SAGA D.C. GmbH
P.O. Box 16 22
D-55224 Alzey

Contact: Jochen Grotepass – Managing Director –
Email: <mailto:pr@sagadc.com>
Phone: +49(0) 6731-9428-0
<http://www.sagadc.com>